



Jofam Sàrl

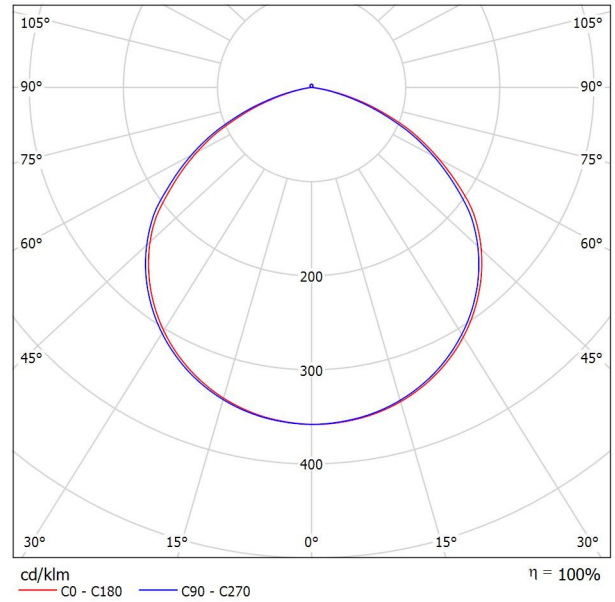
Chemin du Carroz d'Amont 2
CH-1264 St-Cergue

Operator Phillip Jones
Telephone +41 79 919 36 57
Fax
e-Mail phillip.jones@jofam-sarl.ch

HB01-100 5000K Ra70 ,120° / Luminaire Data Sheet

Luminous emittance 1:

See our luminaire catalog for an image of the luminaire.



Luminaire classification according to UTE: 0.99D+0.01T
CIE flux code: 50 84 98 99 100

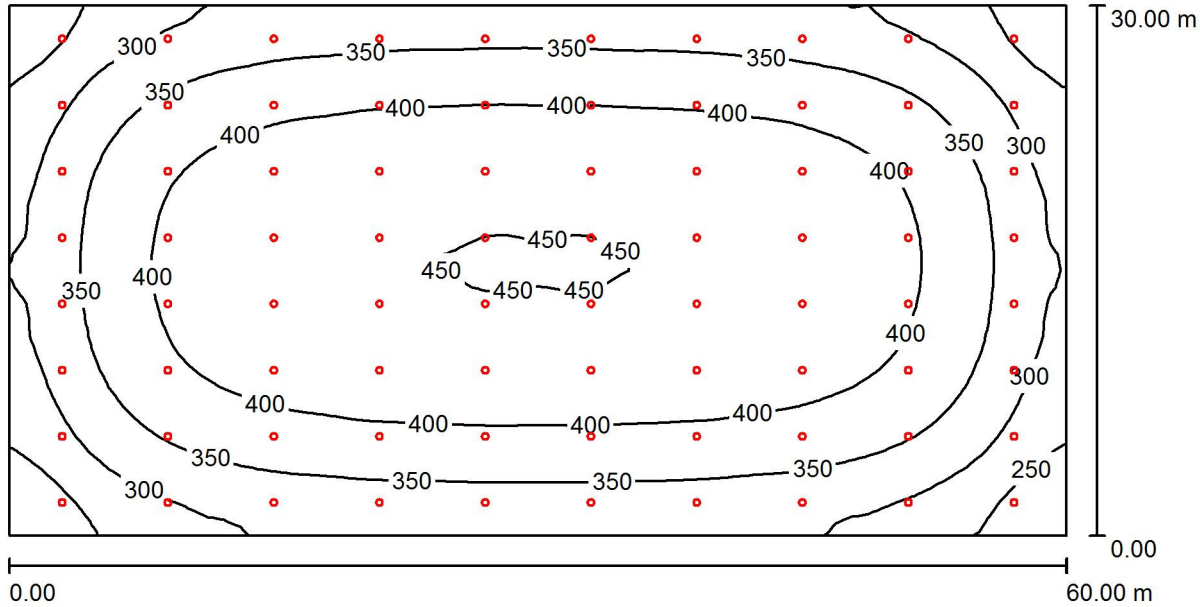
Due to missing symmetry properties, no UGR table can be displayed for this luminaire.

Jofam Sàrl

Chemin du Carroz d'Amont 2
CH-1264 St-Cergue

Operator Phillip Jones
Telephone +41 79 919 36 57
Fax
e-Mail phillip.jones@jofam-sarl.ch

Pièce 1 / Summary



Height of Room: 12.000 m, Mounting Height: 12.000 m, Maintenance factor: 0.67

Values in Lux, Scale 1:429

| Surface | ρ [%] | E_{av} [lx] | E_{min} [lx] | E_{max} [lx] | $u0$ |
|------------|------------|---------------|----------------|----------------|-------|
| Plan utile | / | 371 | 211 | 453 | 0.569 |
| Sol | 20 | 363 | 210 | 444 | 0.579 |
| Plafond | 70 | 86 | 73 | 119 | 0.846 |
| Walls (4) | 50 | 210 | 77 | 434 | / |

Plan utile:

Height: 0.800 m
Grid: 64 x 32 Points
Boundary Zone: 0.000 m

Luminaire Parts List

| No. | Pieces | Designation (Correction Factor) | Φ (Luminaire) [lm] | Φ (Lamps) [lm] | P [W] |
|-----|--------|-----------------------------------|-------------------------|---------------------|--------|
| 1 | 80 | HB01-100 5000K Ra70 ,120° (1.000) | 15090 | 15091 | 102.8 |
| | | | Total: 1207232 | Total: 1207280 | 8224.0 |

Specific connected load: $4.57 \text{ W/m}^2 = 1.23 \text{ W/m}^2/100 \text{ lx}$ (Ground area: 1800.00 m^2)

Jofam Sàrl

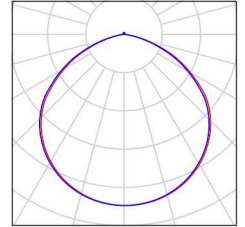
Chemin du Carroz d'Amont 2
CH-1264 St-Cergue

Operator Phillip Jones
Telephone +41 79 919 36 57
Fax
e-Mail phillip.jones@jofam-sarl.ch

Pièce 1 / Luminaire parts list

80 Pieces HB01-100 5000K Ra70 , 120°
Article No.:
Luminous flux (Luminaire): 15090 lm
Luminous flux (Lamps): 15091 lm
Luminaire Wattage: 102.8 W
Luminaire classification according to UTE:
0.99D+0.01T
CIE flux code: 50 84 98 99 100
Fitting: 1 x 5000K Ra70 (Correction Factor 1.000).

See our luminaire catalog
for an image of the
luminaire.



Jofam Sàrl

Chemin du Carroz d'Amont 2
CH-1264 St-Cergue

Operator Phillip Jones
Telephone +41 79 919 36 57
Fax
e-Mail phillip.jones@jofam-sarl.ch

Pièce 1 / Photometric Results

Total Luminous Flux: 1207232 lm
Total Load: 8224.0 W
Maintenance factor: 0.67
Boundary Zone: 0.000 m

| Surface | Average illuminances [lx] | | | Reflection factor [%] | Average luminance [cd/m ²] |
|------------|---------------------------|----------|-------|-----------------------|--|
| | direct | indirect | total | | |
| Plan utile | 293 | 78 | 371 | / | / |
| Sol | 284 | 79 | 363 | 20 | 23 |
| Plafond | 0.00 | 86 | 86 | 70 | 19 |
| Paroi 1 | 132 | 76 | 208 | 50 | 33 |
| Paroi 2 | 125 | 75 | 200 | 50 | 32 |
| Paroi 3 | 144 | 77 | 221 | 50 | 35 |
| Paroi 4 | 127 | 76 | 203 | 50 | 32 |

Uniformity on the working plane

u₀: 0.569 (1:2)

E_{min} / E_{max}: 0.466 (1:2)

Specific connected load: 4.57 W/m² = 1.23 W/m²/100 lx (Ground area: 1800.00 m²)