



Jofam Sàrl

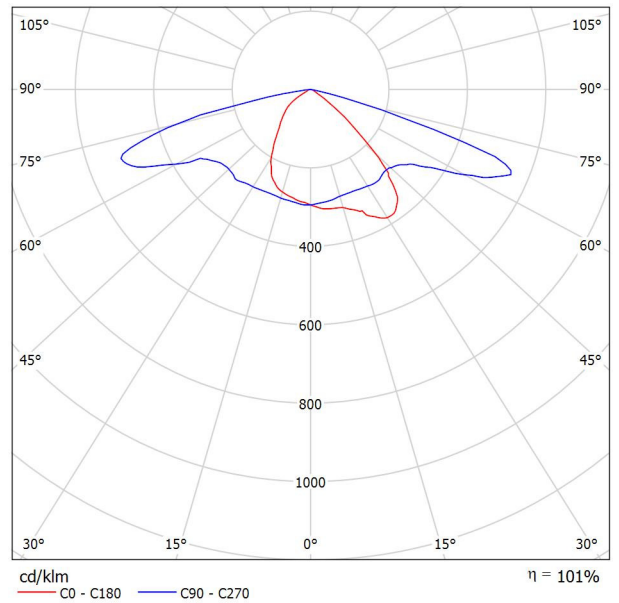
Chemin du Carroz d'Amont 2
CH-1264 St-Cergue

Operator Phillip Jones
Telephone +41 79 919 3657
Fax
e-Mail phillip.jones@jofam-sarl.ch

LD100H 1M / Luminaire Data Sheet

Luminous emittance 1:

See our luminaire catalog for an image of the luminaire.



Luminaire classification according to UTE: 1.01E
CIE flux code: 45 80 98 100 100

Due to missing symmetry properties, no UGR table can be displayed for this luminaire.



Jofam Sàrl

Chemin du Carroz d'Amont 2
CH-1264 St-CergueOperator Phillip Jones
Telephone +41 79 919 3657
Fax
e-Mail phillip.jones@jofam-sarl.ch

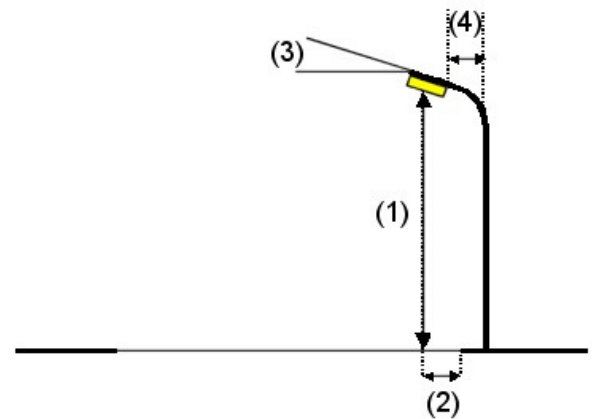
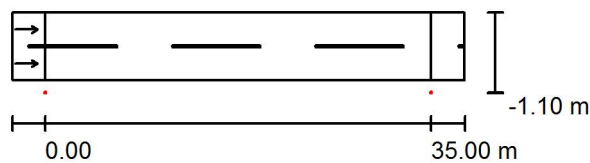
Street 1 / Planning data

Street Profile

Roadway 1 (Width: 6.100 m, Number of lanes: 2, tarmac: R3, q0: 0.080)

Maintenance factor: 0.80

Luminaire Arrangements



Luminaire:	LD100H 1M
Luminous flux (Luminaire):	10554 lm
Luminous flux (Lamps):	10500 lm
Luminaire Wattage:	100.0 W
Arrangement:	Single row, bottom
Pole Distance:	35.000 m
Mounting Height (1):	9.200 m
Height:	9.100 m
Overhang (2):	-1.100 m
Boom Angle (3):	0.0 °
Boom Length (4):	0.300 m

Maximum luminous intensities

at 70°:	515 cd/klm
at 80°:	110 cd/klm
at 90°:	3.80 cd/klm

Any direction forming the specified angle from the downward vertical, with the luminaire installed for use.

No luminous intensities above 90°.

Arrangement complies with luminous intensity class G2.

Arrangement complies with glare index class D.4.



Jofam Sàrl

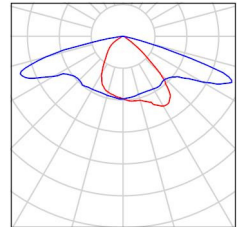
Chemin du Carroz d'Amont 2
CH-1264 St-Cergue

Operator Phillip Jones
Telephone +41 79 919 3657
Fax
e-Mail phillip.jones@jofam-sarl.ch

Street 1 / Luminaire parts list

LD100H 1M
Article No.:
Luminous flux (Luminaire): 10554 lm
Luminous flux (Lamps): 10500 lm
Luminaire Wattage: 100.0 W
Luminaire classification according to UTE: 1.01E
CIE flux code: 45 80 98 100 100
Fitting: 1 x User defined (Correction Factor 1.000).

See our luminaire catalog for an image of the luminaire.

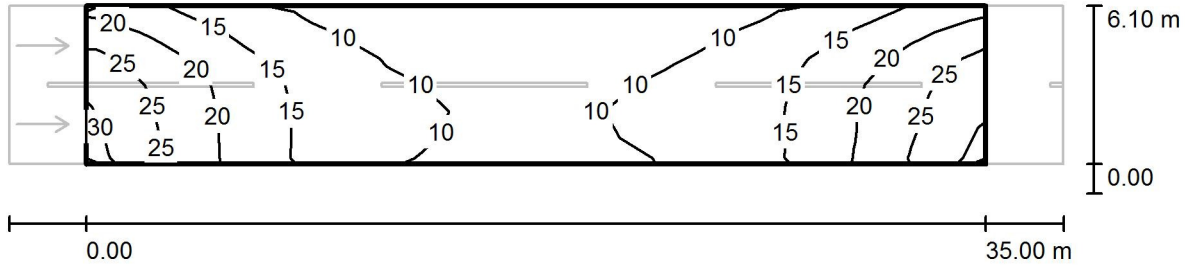




Jofam Sàrl
 Chemin du Carroz d'Amont 2
 CH-1264 St-Cergue

Operator Phillip Jones
 Telephone +41 79 919 3657
 Fax
 e-Mail phillip.jones@jofam-sarl.ch

Street 1 / Valuation Field Roadway 1 / Isolines (E)



Values in Lux, Scale 1 : 294

Grid: 12 x 6 Points

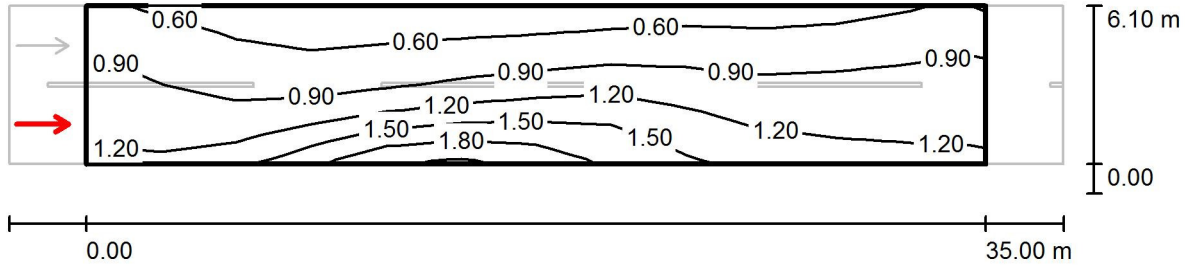
E_{av} [lx]	E_{min} [lx]	E_{max} [lx]	u0	E_{min} / E_{max}
15	6.23	29	0.427	0.218



Jofam Sàrl
 Chemin du Carroz d'Amont 2
 CH-1264 St-Cergue

Operator Phillip Jones
 Telephone +41 79 919 3657
 Fax
 e-Mail phillip.jones@jofam-sarl.ch

Street 1 / Valuation Field Roadway 1 / Observer 1 / Isolines (L)



Values in Candela/m², Scale 1 : 294

Grid: 12 x 6 Points
 Observer Position: (-60.000 m, 1.525 m, 1.500 m)
 tarmac: R3, q0: 0.080

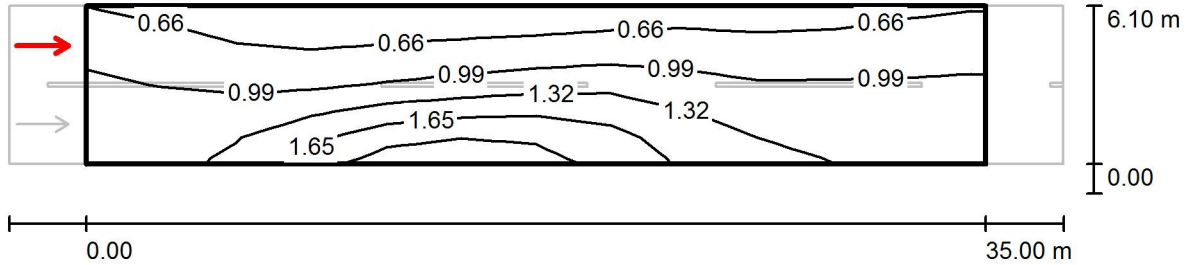
	L_{av} [cd/m ²]	U0	UI	TI [%]
Calculated values:	0.99	0.47	0.65	10
Required values according to class ME4a:	≥ 0.75	≥ 0.40	≥ 0.60	≤ 15
Fulfilled/Not fulfilled:	✓	✓	✓	✓



Jofam Sàrl
 Chemin du Carroz d'Amont 2
 CH-1264 St-Cergue

Operator Phillip Jones
 Telephone +41 79 919 3657
 Fax
 e-Mail phillip.jones@jofam-sarl.ch

Street 1 / Valuation Field Roadway 1 / Observer 2 / Isolines (L)



Values in Candela/m², Scale 1 : 294

Grid: 12 x 6 Points
 Observer Position: (-60.000 m, 4.575 m, 1.500 m)
 tarmac: R3, q0: 0.080

	L_{av} [cd/m ²]	U0	UI	TI [%]
Calculated values:	1.07	0.45	0.70	4
Required values according to class ME4a:	≥ 0.75	≥ 0.40	≥ 0.60	≤ 15
Fulfilled/Not fulfilled:	✓	✓	✓	✓